

MANCHESTER JOB SHOW

SHOW GUIDE



MANCHESTER

JOB SHOW

TRAFFORD
MANCHESTER

7 & 8 MARCH 2025

MAIN SPONSOR

NHS

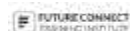
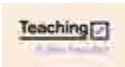
Professionals

OPEN FROM 11:00 - 17:00

Scan here
for more



EXHIBITORS INCLUDE



FREE ENTRY - REGISTER AT WWW.MANCHESTERJOBSHOW.CO.UK



Bright Futures

FOR YOUR JOURNEY AHEAD

Supporting you to make a difference!

At Bright Futures, we make a real difference to the lives of young people and adults with autism, learning disabilities and complex needs. Through our dedicated and expert team, we deliver outstanding care and education.

We're recruiting for roles in our new Adult Residential Home in Greater Manchester:

- > Senior Residential Support Worker
- > Residential Support Worker
- > Night Shift Support Worker



Scan for
vacancies



New roles in
Greater Manchester

www.brightfuturescare.co.uk



Smiling

on your way to work.

It's an **iQ** thing



CHARLES TYRWHITT

JERMYN STREET LONDON

Find Your Perfect Fit

Are you passionate about making a difference in the lives of children?

At Thrive, a leader in the Early Years Industry, we are seeking dedicated individuals to join our team! As part of our team, you'll have the opportunity to foster growth, and create a lasting impact.

If you're enthusiastic, compassionate, and eager to contribute to a nurturing environment, we want to hear from you! Join us in our mission to provide exceptional care and education to children during their crucial developmental years.



Apply now and be a part of something meaningful
careers@thrivechildcare.com

INDITEX



WE ARE
RECRUITING!
Sales Assistants

Be part of
our story.
Let us be
part of
yours!



ZARA Massimo Dutti STRADIVARIUS BERSHKA PULL&BEAR ZARWONE OYSHO



#GENERATIONTK

Are you ready to take the next step?

About thyssenkrupp Materials UK

We are an established supplier and a world leader in metal supplies within an array of sectors.

We operate a network of 8 sites within England and Northern Ireland which are; Preston, Darton, Birmingham, Central Warehouse, Head Office & Fabrications (Cradley Heath, Birmingham), Milton Keynes and 2 in Belfast.

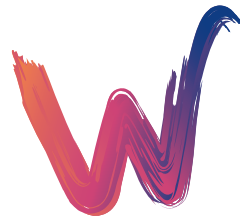
We recruit in various areas, including:

- Operations
- Logistics
- Commercial
- Finance
- Marketing
- IT
- HR
- Purchasing
- QSHE

Our key benefits include:

- A Company Bonus
- Christmas Shutdown
- Pension Plan
- Company Discounts on Major Retailers
- Length of Service Award
- Eye-care Vouchers
- Well-being Events

engineering.tomorrow.together.



Wythenshawe
Community Housing Group



We provide homes and services for 29,000 people in South Manchester. Our teams work in offices, out in our community, and fixing and improving homes.

Whatever your skills, we could have a role for you!



Reward and recognition schemes



Generous annual and family leave



Competitive pay, flexible working



Enhanced pension, life assurance



Health cash plan, wellbeing initiatives



Subsidised social events



www.wchg.org.uk/careers

BAE SYSTEMS

Where people need you

Careers that mean more, where you count

Do you want your work to matter? Do you want to make a positive impact and help keep the world safe? We're recruiting for critical roles you may never have considered before.

Discover the future you
baesystems.com/careers





We Are Hiring For Talented Sales Professionals!

Fusion For Business is a dynamic and forward-thinking company, empowering businesses with smarter energy solutions. We're on the lookout for ambitious and driven individuals to join our high-energy, high-reward team as a **Energy Sales Consultant**. In this role, you'll connect with clients, unlock new business opportunities, and close deals that make a real impact. If you're ready to take your career to the next level, visit our stand and discover the exciting opportunities we have to offer!

Role Responsibilities



As an Energy Sales Consultant, you'll drive B2B sales, provide tailored energy solutions, and build long-term client relationships. Your role includes consulting, negotiating, and coding energy contracts while meeting key performance targets.

Key Skills/ Experience



We're looking for driven individuals with sales and customer service experience. If you're motivated, skilled in CRM and relationship building, and thrive in a fast-paced environment, this is the perfect role for you!

FFB Benefits



£25,000 - £35,000 basic salary with OTE £80,000, plus incentives, Career growth opportunities, and a Christmas shutdown. Join our high-energy team!



Seashell



Cheadle Hulme, Stockport, SK8 6RQ
seashelltrust.org.uk/work-with-us
recruitment@seashelltrust.org.uk



JOIN OUR TEAM!

careers.jigsawhomes.org.uk



APPLY TODAY!



Creating homes. Building lives.

If you are looking to further your career in housing, learn and develop new skills and be part of a supportive team, then Jigsaw Homes Group could be the right place for you.

We employ a diverse and vibrant workforce of **over 1,500 employees** across the **North West** and **East Midlands**. We also have a huge range of positions split across six main directorates, which include **skilled trades, IT roles, support, administration and customer services**.

What we can offer you...

- ★ Flexible/Hybrid Working
- ★ Pension Contribution
- ★ Income Protection
- ★ Occupational Sick Pay
- ★ Enhanced Maternity/Paternity
- ★ Development Opportunities
- ★ Rest, Reset & Recharge Day
- ★ Health Cash Plans
- ★ On-site Gyms
- ★ Generous Annual Leave
- ★ Wellbeing Initiatives
- ...and much MORE!

careers.jigsawhomes.org.uk

BUILD A CAREER IN SOCIAL HOUSING WITH JIGSAW



Looking for your path into the NHS?

Join our pioneering Healthcare Support Worker Development (HCSWD) Programme

- 3-6 months training at a local Trust
- 30 hours per week
- Weekly pay
- Exceptional career opportunities
- No experience necessary

Freedom Ndlovu
Healthcare Assistant

Scan QR code:



Find out more today: go.nhsp.uk/HCSWD



Professionals



Alexander Knight
Healthcare Assistant



Dorothy Madu
Healthcare Assistant

Julie Cookson
Healthcare Assistant



Vaisakh Jyothikumar
Healthcare Assistant

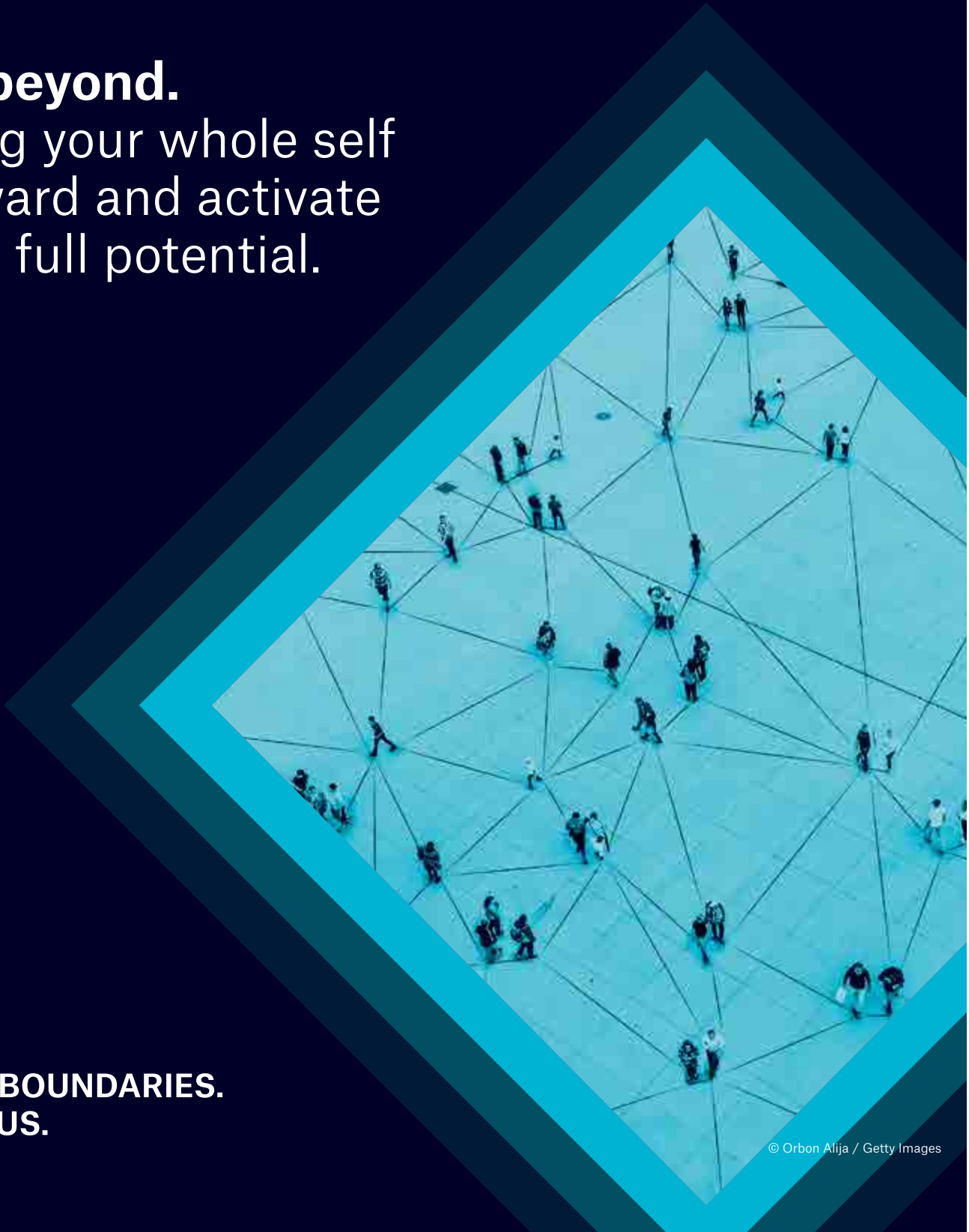


Laura Higham
Healthcare Assistant



Sachin Saju
Healthcare Assistant

Go beyond.
Bring your whole self
forward and activate
your full potential.



**PUSH BOUNDARIES.
WITH US.**

© Orbon Alija / Getty Images

National Careers Service



You've probably heard of the National Careers Service, but did you know that you don't have to be out of work to enjoy our **FREE SUPPORT?**

We provide advice and guidance whether you're looking for your first job, want additional skills or a change of direction.

Not only can we help create great CVs, we also offer a range of services and training; from mock interviews to career action plans, we've got you covered.

We don't just sit behind a desk; we're also out and about sporting our eye-catching pink t-shirts at job fairs and other places, where we can meet you face to face.

You can also give us a call on **0800 100 900** or visit **nationalcareers.service.gov.uk**



NORTHERN

*Careers that
go the distance.*

Join Northern and help shape
the future of the modern railway.

Visit northernrailway.co.uk/careers
to find out more and apply.



PLS

SOLICITORS

Visit the team at
Stand 28!

Join the Leading UK Conveyancing Firm!

Are you ready to kickstart your career in property law?

At PLS Solicitors, we are the number one choice for conveyancing, helping people buy and sell their homes every day. Conveyancing, the legal process of transferring property ownership, is fast-paced, rewarding, and essential to the property market.

Why Choose Us?

- **Dynamic Work Environment:** Be part of a team that thrives in a fast-paced setting.
- **Rewarding Career:** Experience the satisfaction of helping people navigate one of the most significant transactions of their lives.
- **Growth Opportunities:** We are dedicated to your professional development and career growth.

Who We're Looking For:

- **Enthusiastic Individuals:** Those with great admin and customer service skills who are eager to learn and passionate about helping people.
- **Dedicated Professionals:** Those with previous experience, ready to grow and make a difference in the property law sector.



Start Your Journey with PLS Solicitors!

Come and chat with our team about how you can grow your career in property law with us.
We'd love to meet you!

W: www.pls-solicitors.co.uk

E: recruitment@pls-solicitors.co.uk



Scan here to
learn more about
careers at PLS!



LAUNCH YOUR CAREER WITH REAL-WORLD EXPERIENCE AND TRAINING

Wherever you are in your career - we're here to support you

Do you want a career but not sure where to start?

- Get job-ready with our quick 2-3 week Vocational Courses, designed to give you all the skills you need
- Take part in Experience Days to get a "real feel" for the job
- Build your confidence with our 9-week Functional Skills Courses in maths and English
- We team up with top employers to guarantee you an interview.

How about an apprenticeship?

- Earn while you learn and get the skills you need to progress
- Get support from industry expert learning coaches
- Amazing opportunities in Early Years & Education, Engineering, Automotive, HR, Business Administration and more.



Start your journey today at totalpeople.co.uk or call 0333 222 666



SES GROUP

CUSTOMER
∨
TEAM
∨
YOU

THERE'S **ALWAYS** A
Better way

Zuto

GET IT
DONE

Enjoy **the**
Journey



STEELE RECRUITMENT



Apply Now, **ENROLEMENTS NOW OPEN** Intake 2025 / 2026

Why not try our fast-track registration
online at: www.steelerecruitment.co.uk

Your Gateway to Higher Learning
Fully Government Funded Courses
Maintenance Loan, Disability Grant
Adult Dependants' Grant, Course Fee Loans



CAMPUSES

- MANCHESTER • LONDON
- BIRMINGHAM • LEEDS
- NEWCASTLE AND MORE...

Student Grant Loans up to £21000
No Qualifications Needed
No Previous Education
Experience Needed
Day, Evening, Weekend &
Online Classes Available

OUR SERVICES

- ✓ Free Advice on University Selection (UK)
- ✓ One to One Consultation
- ✓ Course Selection Support
- ✓ Assistance with Full Admission Process
- ✓ We Welcome Refugees & Asylum Seekers

COURSES

- ✓ Level 3, 4, 5, 6 Courses
- ✓ BA Hons / BSc Business
- ✓ BA Hons / BSc Health & Social Care
- ✓ Health Management
- ✓ Law LLB
- ✓ BA Criminology
- ✓ BSc Computing
- ✓ Construction Management & Top-Up
- ✓ Level 5 Diploma in Education Training
- ✓ Accounting & Financial Management
- ✓ Business & Tourism
- ✓ HND Business & Healthcare

PLUS LOTS MORE COURSES



FOR MORE INFORMATION

Why not check-out our website: www.steelerecruitment.co.uk

Email: info@steelerecruitment.co.uk OR Tel: 0800 098 3845



Your Future Looks Strong with Steele Recruitment 💪



Apprenticeships and Courses

Upskill with the Growth Company – Education & Skills

Opportunities for progression

Greater Manchester and beyond

We've been established for over 30 years, making us experts in our field delivering:

- Pre-apprenticeships / Study Programmes
- Apprenticeships
- Adult Courses
- Functional Skills
- Access to Higher Education
- University Courses in partnership with The University of Greater Manchester

SUBJECTS INCLUDE:

- Accounting & Financial Services
- Automotive
- Business & Professional
- IT, Digital and Marketing
- Construction
- Engineering & Manufacturing
- Health, Care & Education
- Green Technology

We have centres across Greater Manchester and St Helens plus our state of the art, purpose built SkillCentre in Trafford Park, Manchester which specialises in Automotive, Construction, Engineering and Manufacturing.



[GCE EDUCATION AND SKILLS.AC.UK](https://gceducationandskills.ac.uk)



RECRUITMENT@GCE EDUCATION AND SKILLS.AC.UK



0161 233 2656

SCAN ME!



NEXT EVENT

MANCHESTER

JOB
SHOW

TRAFFORD
MANCHESTER

27 & 26 SEPTEMBER 2025



WWW.MANCHESTERJOBSHOW.CO.UK